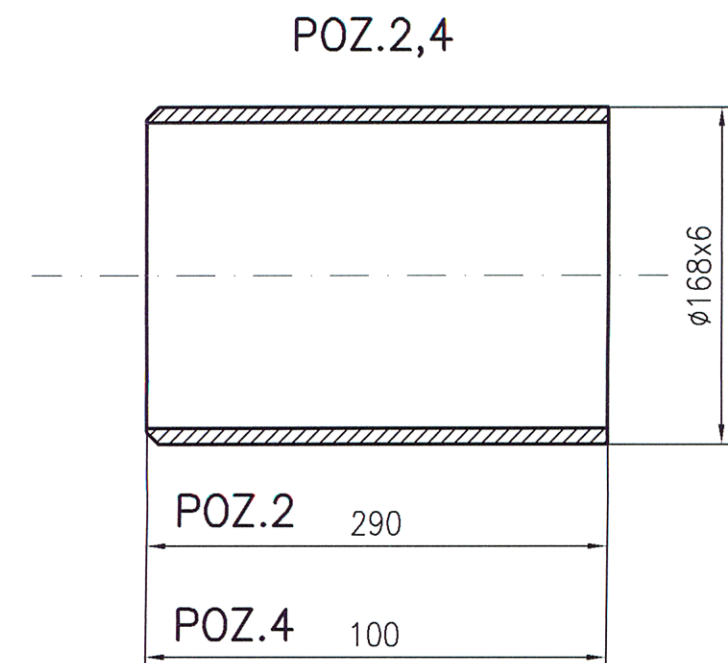
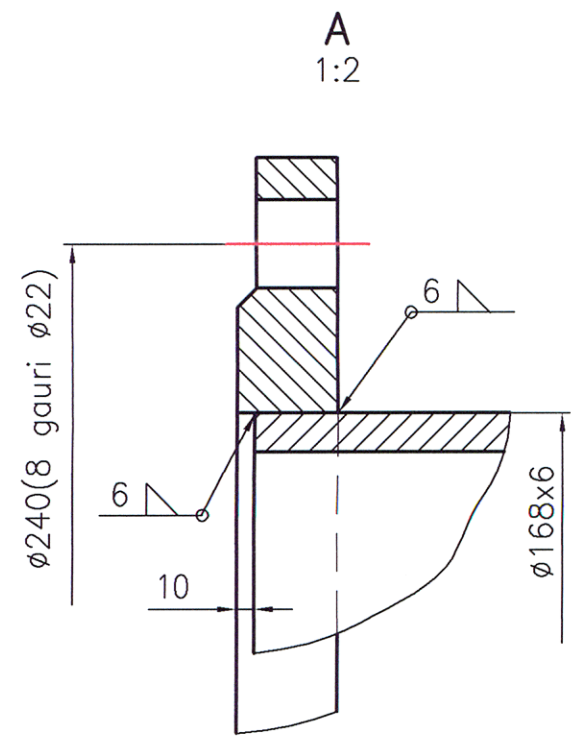
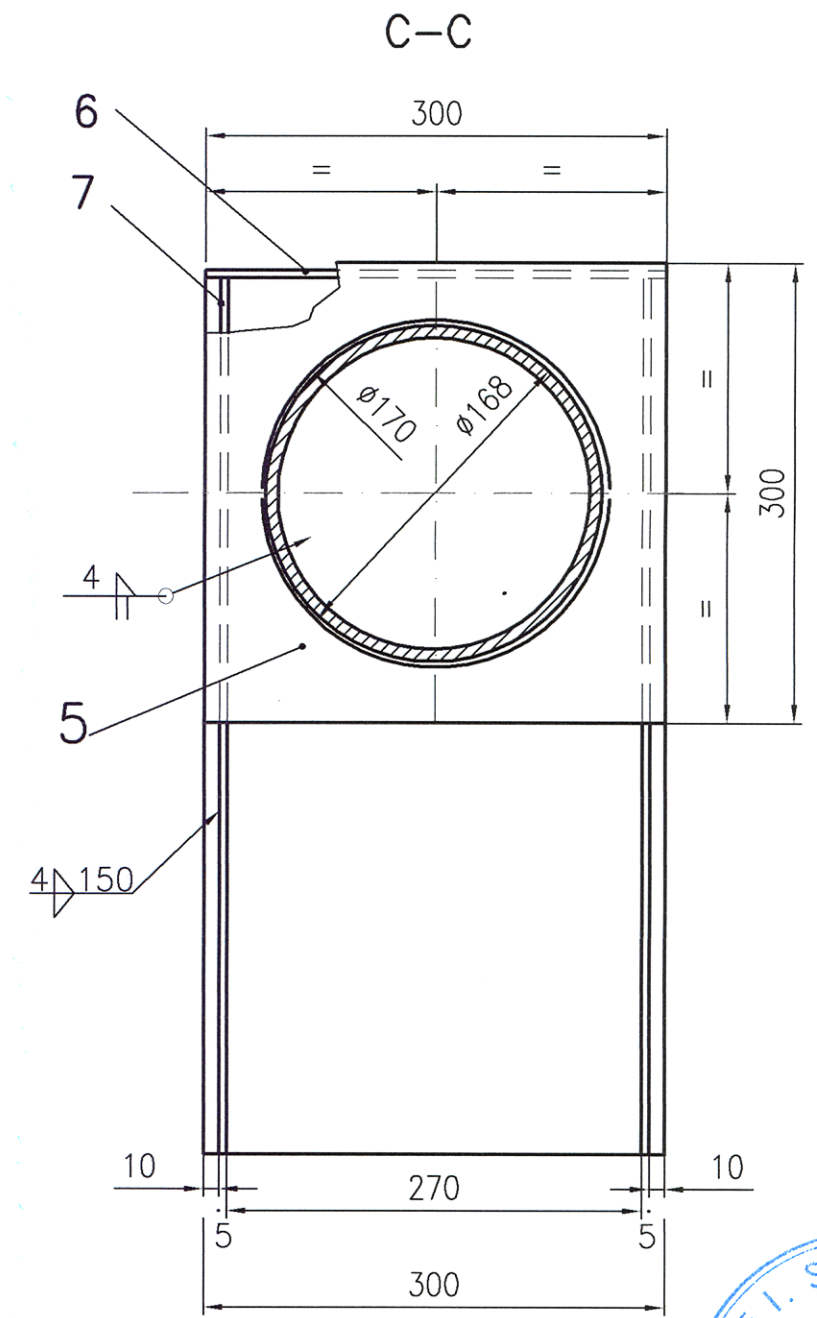
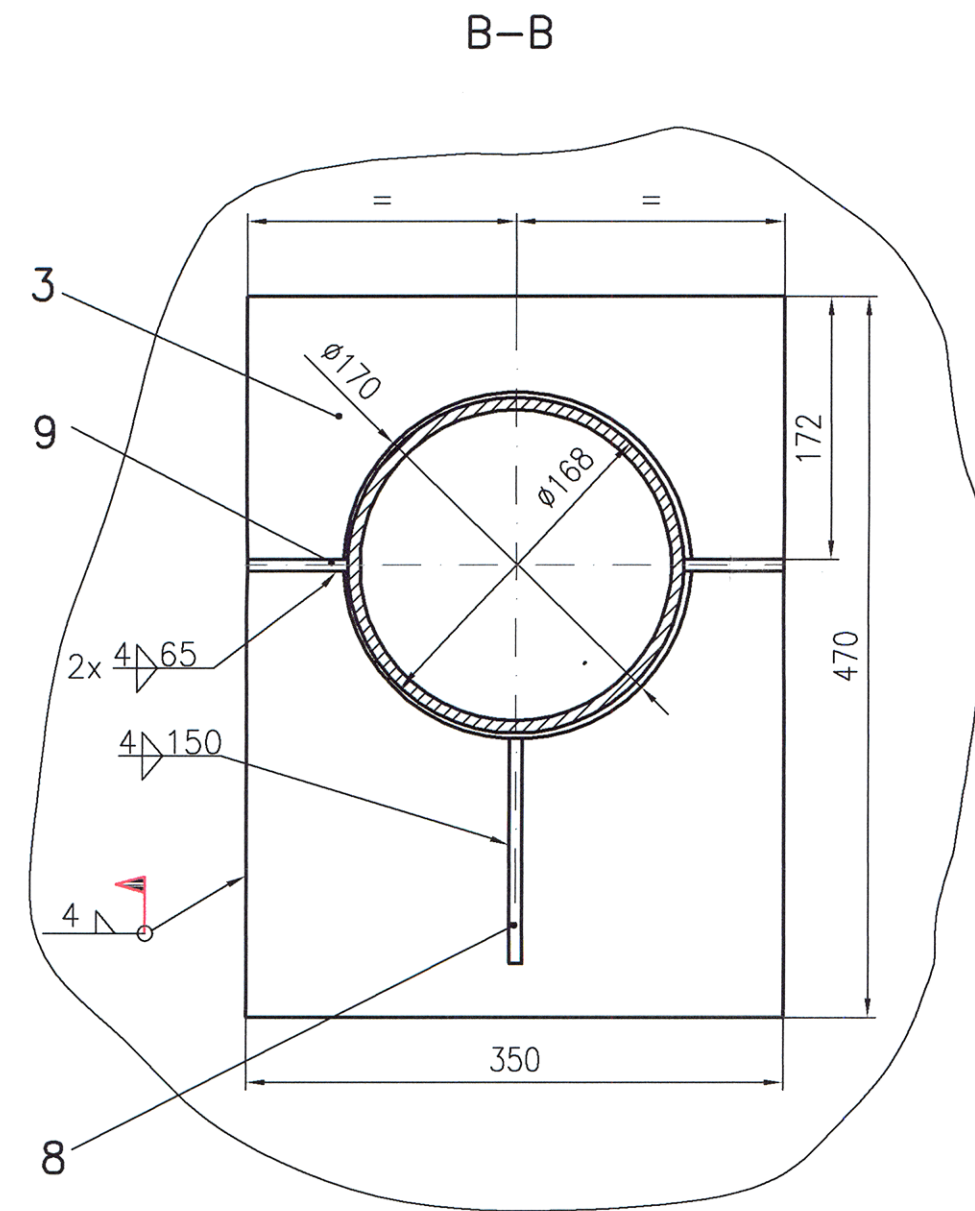
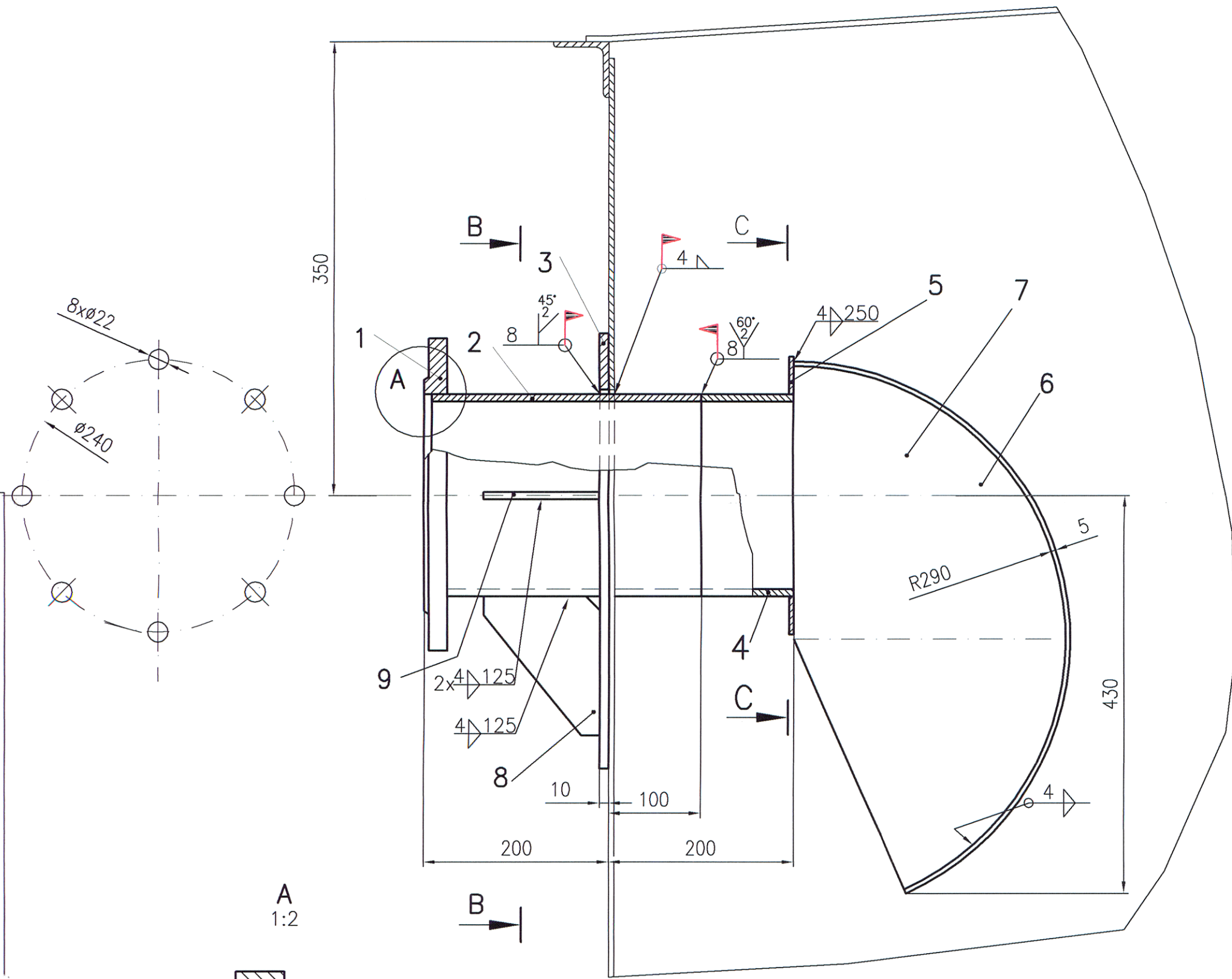
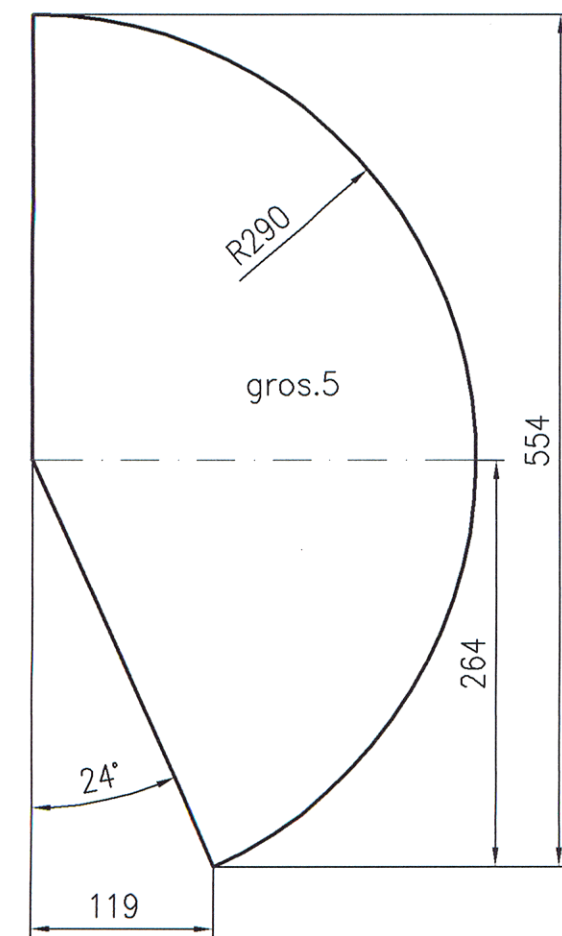


ACEST DOCUMENT ESTE PROPRIETATEA SOCIETATII ELLIS'92 S.R.L.-PLOIESTI. IN CONSECINTA, FIRMA ARE DREPTUL EXCLUSIV DE FOLOSIRE A DESENULUI SAU DE OPERARE A EVENTUALELOR MODIFICARI IN CAMPIUL ACESTUIA.

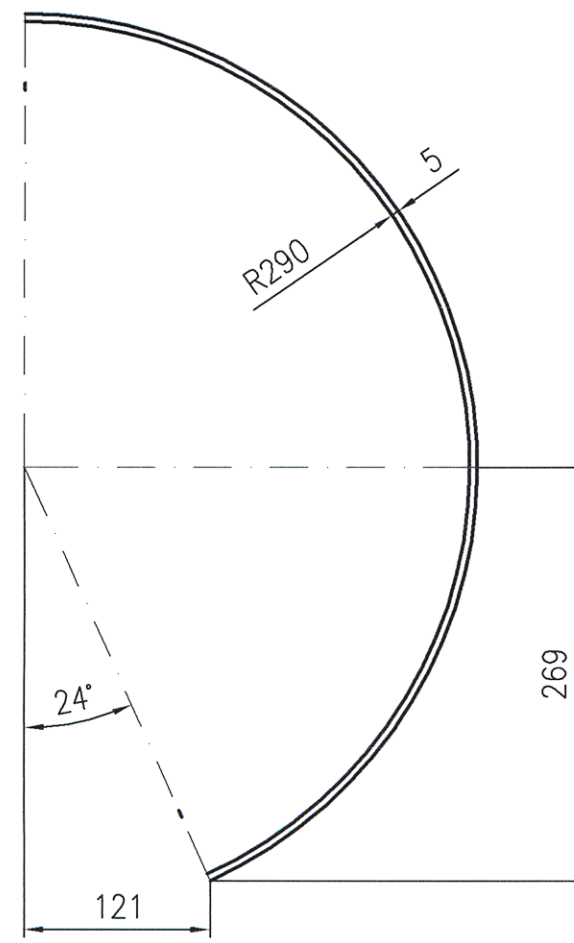


POZ.7

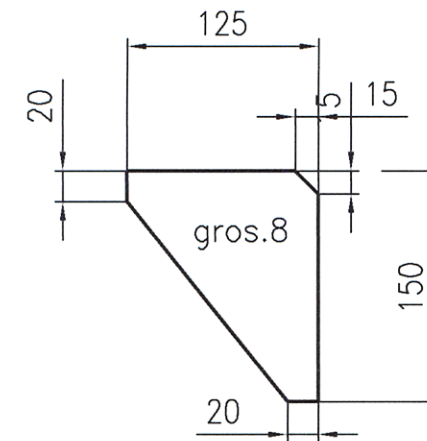


POZ.6

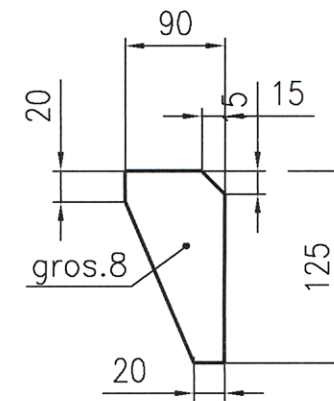
5x300x795



POZ.8



POZ.9



### NOTA

- Pozitia gaurilor din flansa de legatura, Poz.1, se va corela cu gaurile din flansa generatorului de spuma.
- Se vor executa 2 bucati.

	ELECTROZI	SR EN ISO 2560:2010		E 35 2 B		1.7	
9	NERVURA	SR EN 10025/2:2004	2	S235J2	8x90x125	0.3	
8	NERVURA	SR EN 10025/2:2004	1	S235J2	8x125x150	0.7	
7	PERETE	SR EN 10025/2:2004	2	S235J2	5x290x554	6.4	
6	PLACA DEVERSOARE	SR EN 10025/2:2004	1	S235J2	5x300x795	6.6	
5	PLACA	SR EN 10025/2:2004	1	S235J2	5x300x300	2.5	
4	STUT	SR EN 10216-1	1	P235TR2	Tv.219x8-100	3.2	
3	INEL COMPENSARE	SR EN 10027-1	1	S235J2	8xØ170xØ470	7.9	
2	STUT	SR EN 10216-1	1	P235TR2	Tv.168x6-290	9.3	
1	FLANSA 01B PN16 DN150	SR EN 1092:2008	1	P280GH		6.7	
Poz.	DENUMIREA	Nr.DESEN sau STAS	BUC.	MATERIAL	OBS.	Masa kg/buc	
△			△				
△			△				
△			△				
Rev.	Descriere	Data	Semnat	Rev.	Descriere	Data	Semnat
Acest document este proprietatea S.C. ELLIS'92 S.R.L. si nu va fi comunicat fara autorizare							
Intocmit	Verificat	Aprobat	Beneficiar		Denumire proiect		
B.Stroie	R.Nita	A.Ionescu	CONPET SA		CONSTRUCTIE REZERVOR NOU PENTRU TITEI (V=2500 mc) STATIA DE POMPARE POIANA LACULUI		
92 ELLIS arhitectura proiectare inginerie consultanta tehnica		SR AC ISO 9001 DEVERSOR SPUMA DN150		Nr.: A643-PSI-01.02 Scara: 1:5(1:20) Index: A642-PSI-BD		Rev.0	
Material:		Masa: 105 kg		Data: 09.2018		Plansa: 1/1	

